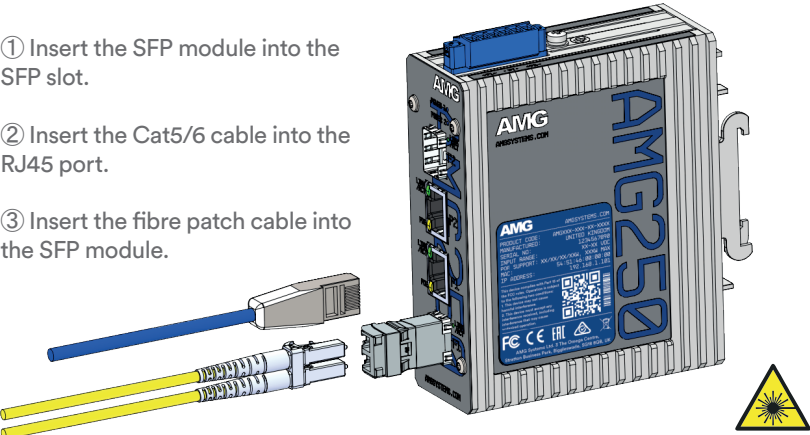


/ INTERFACE CONNECTIONS

- ① Insert the SFP module into the SFP slot.
- ② Insert the Cat5/6 cable into the RJ45 port.
- ③ Insert the fibre patch cable into the SFP module.



SCAN ME



/ PORT SPEEDS

Example part code:

AMG250-2GAT-2S-P60

Character	RJ45 Port Speed	SFP* Port Speed
F	10/100 Base-T(X)	100/1000 Base-FX
G	10/100/1000 Base-T(X)	

*SFP's supplied separately. Refer to AMG website and SFP Datasheets for available models.

/ POE CAPABILITIES

Example part code:

AMG250-2GAT-2S-P60

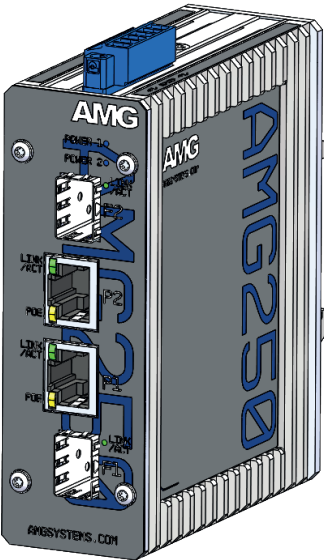
Characters	PoE Standard Supported	Characters	PoE Budget
None	Non-PoE Model	P30	30W Max
AT	IEEE 802.3at 30W Port	P60	60W Max
BT	IEEE 802.3bt 60/90W Port	P90	90W Max
		P180	180W Max

Check the product label to determine the PoE power supported on each port and the units total maximum PoE budget.

Ensure the PSU size used is at least equal to the maximum PoE budget figure.

IEEE 802.3at Models
Type 1 & 2 PoE support
Mode A PSE only

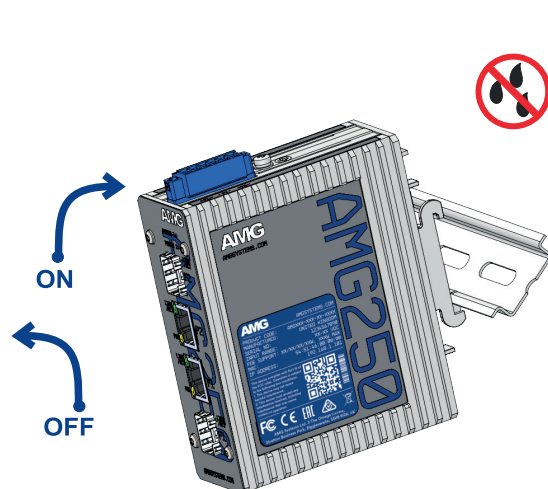
IEEE 802.3bt Models
Type 1, 2, 3 & 4 PoE support. Mode A and/or Mode B PSE



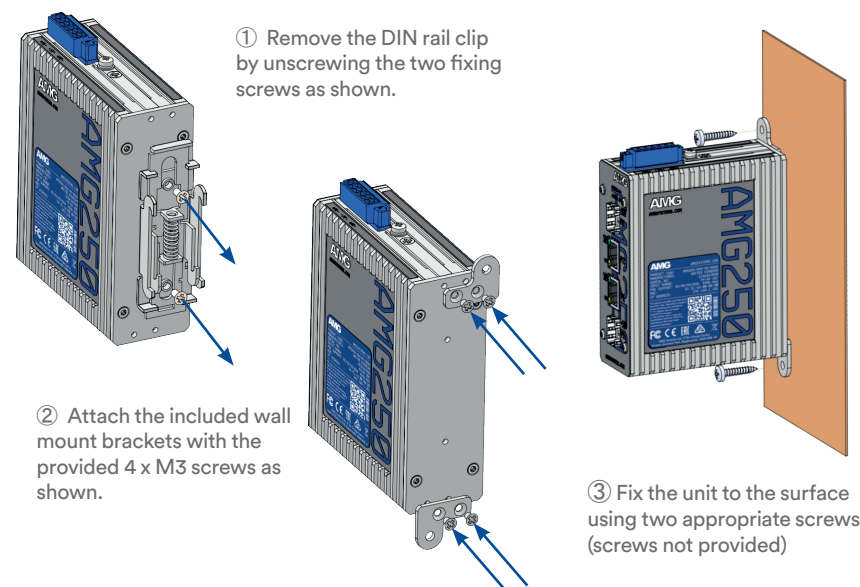
AMG250 Series Industrial Media Converter

Installation Manual - Hardware

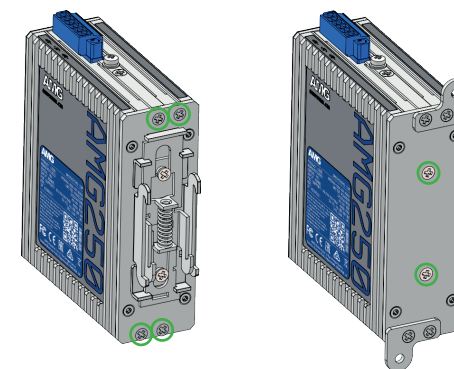
/ DIN RAIL MOUNT INSTALLATION



/ SURFACE MOUNT INSTALLATION

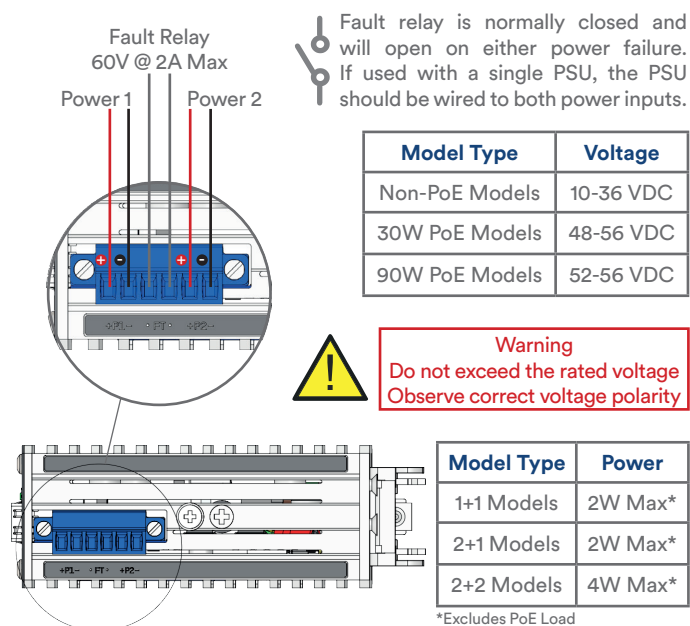


/ IP RATING

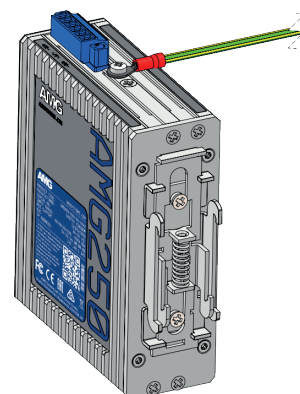


To maintain the units IP40 rating any screw holes that are not used should still have their screws installed as shown in green above.

/ POWER



/ EARTH PROTECTION



To provide correct protection from ESD and Surge events ensure that the unit is correctly earthed using the provided earth connection point in accordance with local electrical codes & standards. (cable not provided)

/ LED INDICATORS

